

DEPARTMENT OF THE ARMY TECHNICAL MANUAL

**DIRECT SUPPORT AND GENERAL SUPPORT MAINTENANCE
REPAIR PARTS AND SPECIAL TOOLS LISTS (INCLUDING
DEPOT MAINTENANCE REPAIR PARTS AND SPECIAL TOOLS)
RADIO SETS AN/GRC-26A, AN/GRC-26B, AND AN/GRC-26C AND
RADIO TELETYPEWRITER CONTROLS C-808/GRC-26A AND
C-808A/GRC-26A
FSN 5815-709-0638**

Headquarters, Department of the Army, Washington, D.C.
21 July 1973

		Paragraph	Page
SECTION	I.	INTRODUCTION	
		Scope	1-1 2
		General	1-2 2
		Explanation of columns	1-3 2
		Special information	1-4 4
		Location of repair parts	1-5 5
		Abbreviations (Not applicable).....	1-6 5
		Reporting of equipment publication improvements	1-7 5
	II.	REPAIR PARTS LIST	6
Group	0001	Radio Set AN/GRC-26A, B, C.....	6
	0002	Radio Teletypewriter Control C-808/GRC-26A	11
SECTION	III.	SPECIAL TOOLS, TEST AND SUPPORT EQUIPMENT (Not applicable)	
	IV.	INDEX - FEDERAL STOCK NUMBER AND REFERENCE NUMBER CROSS-REFERENCE TO FIGURE AND ITEM NUMBER	17

*This manual supersedes TM 11-5820-202-34P, 9 December 1958, including all changes.

SECTION I

INTRODUCTION

1-1. Scope

This manual lists repair parts and **special tools** required for the performance of direct support, general support, and depot maintenance of the AN/GRC-26A, AN/GRC-26B, AN/GRC-26C, C-808/GRC-26A, and C-808A/GRC-26A. The PCCN for the AN/GRC-26A, B, and C is GCRAAE for all models. The PCCN for the C-808/GRC-26A, -808A is GCRAHT for all models.

1-2. General

This repair parts and special tools list is divided into the following sections:

a. Repair Parts List - Section II. A list of repair parts authorized for the performance of maintenance at the direct support, general support, and depot level. This repair parts list is arranged in alphabetical order.

b. Special Tools, Test and Support Equipment - Section III. Not applicable.

c Index-Federal Stock Number and Reference Number Cross-Reference to Figure and Item Number--Section IV. A list, in ascending numerical sequence, of all Federal stock numbers appearing in the listings, followed by a list, in alphameric sequence, of all reference numbers appearing in the listings. Federal stock number and reference numbers are cross-referenced to each illustration figure and item number or reference designation appearance.

1-3. Explanation of Columns

The following provides an explanation of columns found in the tabular list.

a Source, Maintenance, and Recoverability Codes (SMR).

(1) Source code. Indicates the manner of acquiring support items for maintenance, repair, or overhaul of end items. Source codes are-

Code	Explanation
PA-	Item procured and stocked for anticipated or known usage.
PB—	Item procured and stocked for insurance purposes because essentiality dictates that a minimum quantity be available in the supply systems.
PC—	Item procured and stocked and which otherwise would be coded PA except that it is deteriorative in nature.
PD—	Support item, excluding support equipment, procured for initial issue or outfitting and

Code

Explanation

	stocked only for subsequent or additional initial issues or outfittings. Not subject to automatic replenishment.
PE-	Support equipment procured and stocked for initial issue or outfitting to specified maintenance repair activities.
PF-	Support equipment which will not be stocked but which will be centrally procured on demand.
PG-	Item procured and stocked to provide for sustained support for the life of the equipment. It is applied to an item peculiar to the equipment which because of probable discontinuance or shutdown of production facilities would prove uneconomical to reproduce at a later time.
KD-	An item of depot overhaul/repair kit and not purchased separately. Depot kit defined as a kit that provides items required at the time of overhaul or repair.
KF-	An item of a mainten ance kit and not purchased separately. Maintenance kit defined as a kit that provides an item that can be replaced at organizational or direct support or general support levels of mainten ance.
PB-	Item included in both a depot overhaul/repair kit and a maintenance kit.
MO-	Item to be manufactured or fabricated at organizational level.
MF-	Item to be manufactured or fabricated at direct support maintenance level.
MH-	Item to be manufactured or fabricated at general support maintenance level.
MD—	Item to be manufactured or fabricated at depot maintenance level.
AO—	Item to be assembled at organizational level.
AF—	Item to be assembled at direct support maintenance level.
AH—	Item to be assembled at general support maintenance level.
AD—	Item to be assembled at depot maintenance level.
XA—	Item is not procured or stocked because the requirements for the item will result in the replacement of the next higher assembly.
XB—	Item is not procured or stocked. If not available through salvage, requisition.
XC—	Installation drawing, diagram instruction sheet, field service drawing, that is identified by manufacturers' part number.
XD—	Support items can be requisitioned with justification.

NOTE

Cannibalization or salvage may be used as a source of supply for any items sourced above except those coded XA and aircraft support items as restricted by AR 700-42.

(2) *Maintenance code.* Maintenance codes are assigned to indicate the levels of maintenance authorized to USE and REPAIR support items. The maintenance codes are entered in the third and fourth positions of the Uniform SMR Code Format as follows—

(a) *Use (third position).* The maintenance code entered in the third position indicates the lowest maintenance level authorized to remove, replace, and use the support item. The maintenance code entered in the third position indicates one of the following levels of maintenance.

Code	Application/Explanation
O—	Support item is removed, replaced, used at the organizational level of maintenance.

NOTE

A code "C" may be used in this position to denote crew or operator maintenance performed within organizational maintenance.

Code	Application/Explanation
F—	Support item is removed, replaced, used at the direct support maintenance level.
H—	Support item is removed, replaced, used at the general support maintenance.
D—	Support items that are removed, replaced, used at depot only.

(b) *Repair (fourth position).* The maintenance code entered in the fourth position indicates whether the item is to be repaired and identifies the lowest maintenance level with the capability to perform complete repair (i.e., all authorized maintenance functions). When a maintenance code is not used a dash (-) sign is entered. For multi-service equipment/systems or when a code is entered, this position will contain one of the following maintenance codes as assigned by the service(s) that require the code—

Code	Application/Explanation
O—	The lowest maintenance level capable of complete repair of the support item is the organizational level.
F—	The lowest maintenance level capable of complete repair of the support item is direct support.
H—	The lowest maintenance level capable of complete repair of the support item is general support.

Code	Application/Explanation
D—	The lowest maintenance level capable of complete repair of the support item is the depot level.
L—	Repair restricted to designated Specialized Repair Activity.
Z—	Non-repairable. No repair is authorized.
B—	No repair is authorized. The item may be reconditioned by adjusting, lubricating, etc., at the user level. No parts or special tools are procured for the maintenance of this item.

(3) *Recoverability code.* Recoverability codes are assigned to support items to indicate the disposition action on unserviceable items. The recoverability code is entered in the fifth position of the uniform SMR Code Format as follows—

cd?	Explanation
Z—	Nonrepairable item. When unserviceable, condemn and dispose at the level indicated in the first digit of the maintenance code.
O—	Repairable item. When uneconomically repairable, condemn and dispose at organizational level.
F—	Repairable item. When uneconomically repairable, condemn and dispose at the direct support level.
H—	Repairable item. When uneconomically repairable, condemn and dispose at the general support level.
D—	Repairable item. When beyond lower level repair capability, return to depot. Condemnation and disposal not authorized below depot level.
L—	Repairable item. Repair, condemnation, and disposal not authorized below depot/Specialized Repair Activity level.
A—	Item requires special handling or condemnation procedures because of specific reasons (i.e., precious metal content, high dollar value, critical material or hazardous material).

b. *Federal Stock Number.* Indicates the Federal stock number assigned to the item and will be used for requisitioning purposes.

c. *Description.* Indicates the Federal item name and a minimum description required to identify the item. The last line indicates the reference number followed by the applicable Federal Supply Code for Manufacturer (FSCM) in parentheses. The FSCM is used as an element in item identification to designate manufacturer or distributor or Government agency, etc., and is identified in SB 708-42.

d. Unit of Measure (U/M). Indicates the standard or basic quantity by which the listed item is used in performing the actual maintenance function. This measure is expressed by a two-character alphabetical abbreviation, e.g., ea, in, pr, etc., and is the basis used to indicate quantities and allowances in subsequent columns. When the unit of measure differs from the unit of issue, the lowest unit of issue that will satisfy the required units of measure will be requisitioned.

e. Quantity Incorporated in Unit. This column indicates the quantity of the item in the equipment. Subsequent appearances of the same item in the same assembly are indicated by the letters "REF".

f. 30-Day DS/GS Maintenance Allowances.

NOTE

Allowances in GS column are for GS maintenance only.

(1) The repair parts indicated by asterisk entries in separate allowances columns for DS and GS represent those authorized for use at that category of maintenance to be requisitioned on an "as required" basis; until stockage is based on demand in accordance with AR 710-2.

(2) Allowance quantities are indicated in the special tools lists section for special tools, TMDE, and other support equipment.

g. 1-Year Allowances Per 100 Equipments/Contingency Planning Purposes. Column intentionally left blank.

h. Depot Maintenance Allowance Per 100 Equipments. This column indicates opposite the first appearance of each item the total quantity authorized for depot maintenance of 100 equipments.

i. Illustration. This column is divided as follows:

(1) **Figure number.** Indicates the figure number of the illustration on which the item is shown in TM 11-5820-m-35.

(2) **Item number.** Indicates the item number or reference designation used to reference the item in the illustration.

1-4. Special Information

a. Usable on codes are included in column 3. Uncoded items are applicable to all models. Identification of the usable on codes used in this publication are—

Code	Used on
ACF	AN/GRC-26A
ACG	AN/GRC-26B
ACH	AN/GRC-26C
BMC	C-808/GRC-26A
BMD	C-808/GRC-26A
BME	C-808A/GRC-26A

*Barker and Williamson Order.

*Hollister Orders 1908-PH-51, 3131-PH-51, and 3357-PH-52.

Δ The following publications pertain to the equipments and their components:

SIG 7 & 8 CY-1216/U	Electrical Equipment Cabinet CY-1216/U.
SIG 7 & 8 O-39/TRA-7	Frequency Shift Exciter 0-39/TRA-7, 0-39A, B, C/TRA-7.
SIG 7 & 8 O-41/TRA-7	Oscillator 0-41/TRA-7, 0-41A/TRA-7.
SIG 7 & 8 S-69/GRC	Shelter S-69/GRC.
SIG 7 & 8 TU-47	Transmitter Tuning Unit TU-47
SIG 7 & 8 TU-48	Transmitter Tuning Unit TU-48.
SIG 7 & 8 TU-49	Transmitter Tuning Unit TU-49.
SIG 7 & 8 TU-50	Transmitter Tuning Unit TU-50.
SIG 7 & 8 TU-51	Transmitter Tuning Unit TU-51.
SIG 7 & 8 TU-52	Transmitter Tuning Unit TU-52.
SIG 7 & 8 TU-53	Transmitter Tuning Unit TU-53.
SIG 7 & 8 TU-54	Transmitter Tuning Unit TU-54.
TM 11-809-10	Operator's Manual: Radio Transmitters T-368/URT, T-368A/URT, T-368B/URT, T-368C/URT, T-368D/URT, and T-368E/URT; Antenna Tuning Unit BC-939-B; Radio Frequency Tuner TN-339/GR; and Standing Wave Ratio - Power Meter ME-165/G.
TM 11-809-20	Organizational Maintenance: Radio Transmitters T-368/URT, T-368A/URT, T-368B/URT, T-368C/URT, T-368D/URT, and T-368E/URT; Antenna Tuning Unit BC-939-B; Radio Frequency Tuner TN-339/GR; and Standing Wave Ratio - Power Meter ME-165/G.
TM 11-5820-202-20P	Organizational Maintenance: Repair Parts and Special Tools Lists: Radio Sets AN/GRC-26A, AN/GRC-26B, and AN/GRC-26C and Radio Teletypewriter Controls C-

808/GRC-26A and C-808A/GRC-26A.

- TM 11-5820-202-35 **Field and Depot Maintenance: Radio Sets AN/GRC-26A, AN/GRC-26B, and AN/GRC-26C.**
- TM 11-5820-217-10P **Operator's Maintenance Repair Parts and Special Tools List: Power Supplies PP-712/GRC-26A and PP-712A/GRC-26A.**
- TM 11-5820-217-20P **Organizational Maintenance Repair Parts and Special Tools List and Maintenance Allocation Chart: Power Supplies PP-7121GRC26A and PP-712A/GRC-26A.**
- TM 11-5820-217-35P **Field and Depot Maintenance Repair Parts and Special Tools List: Power Supplies PP-712/GRC-26A and PP-712A/GRC-26A**
- TM 11-5820-230-12P **Operator and Organizational Maintenance Repair Parts and Special Tools List and Maintenance Allocation Chart: Radio Set Control Group AN/CRC-14.**
- TM 11-5820-230-35P **Field and Depot Maintenance Repair Parts and Special Tools Lists: Radio Set Control Group AN/GRA-14.**
- TM 11-5820-251-10P **Basic Issue Items List: Masts AB/AB-155/U, AB-155A/U, and AB-155B/U.**
- TM 11-5820-251-20P **Organizational Maintenance Repair Parts and Special Tools List and Maintenance Allocation Chart: Masts AB-155/U, AB-155A/U, and AB-155B/U.**

TM 11-5820-251-35P **Field and Depot Maintenance Repair Parts and Special Tools List: Masts AB-155/U, AB-155A/U, and AB-155B/U.**

1-5. Location of Repair Parts

a. This manual contains one cross-reference index (sec IV) to be used to locate a repair part when either the Federal stock number or reference number (manufacturer's part number) is known. The first column in the index is prepared in numerical or alphanumeric sequence in ascending order. The reference numbers (manufacturer's part numbers) are listed immediately following the land listed Federal stock number in the index of Federal stock numbers.

b. When the Federal stock number or reference number is known, follow the procedures given in (1) and (2) below.

(1) Refer to the index of Federal stock numbers (sec IV) and locate the Federal stock number or reference number. The FSN and reference number are cross-referenced to the applicable figure and item number or reference designation.

(2) Refer to the repair parts list (sec II) and locate the figure number (col 10a) and item number or reference designation (col 10b) as noted in the FSN index.

c. When the figure and item number or reference designation are known, scrutinize column 10a and 10b of the repair parts list (sec II) until the item is located.

d. When the FSN, reference number, figure number, item number and reference designation are not known, scrutinize column 3 of the repair parts list (sec II.), which is arranged in alphabetical order.

1-6. Abbreviations

Not applicable.

1-7. Reporting of Equipment Publication

Improvements

The reporting of errors, omissions, and recommendations for improving this publication by the individual user is encouraged. Reports should be submitted on DA Form 2028 (Recommended Changes to Publications) and forwarded direct to Commander, US Army Electronics Command, ATTN: AMSEL MA-CR, Fort Monmouth, N.J., 07703.

SECTION II.

TM11-5820-202-34P

WAR CODE	FEDERAL STOCK NUMBER	DESCRIPTION REFERENCE NUMBER & MFR. CODE	UNIT OF MEAS	QTY IN UNIT	30-DAY MAINT ALLOWANCE			30-DAY MAINT ALLOWANCE			1-YR ALW PER 100 EQUIP CHTGCT	DEPOT MAINT ALW PER 100 EQUIP	ILLUSTRATION		
					(a)	(b)	(c)	(a)	(b)	(c)			(1)	(2)	
					1-20	21-30	31-100	1-20	21-30	31-100			FIGURE NO.	ITEM NO.	
PAFZZ	5935-247-6281	GROUP 0001 RADIO SET AN/GRC-26A B.C													
PAOZZ	5820-497-8705	ANTENNA COAXIAL CONNECTOR NO-REF-DESIG... SC022040-1 (80053) ACF,ACG,ACH	EA	3											
PAOZZ	5820-404-2718	BRACKET NO-REF-DESIG MAST BRACKET NP30 (79176) ACF	EA	2											
PAOZZ	5805-356-3548	BRACKET NO-REF-DESIG MAST BRACKET NP30A (99176) ACF,ACG,ACH	EA	2											
PAOZZ	5820-497-8596	BRACKET NO-REF-DESIG T SHAPE HOLDS... TELEPHONE IES SCC20020 (80063) ACF,ACG,ACH	EA	1											
PAOZZ	6145-542-6809	BRACKET NO-REF-DESIG..... NT657GRC (80058) ACF,ACG,ACH	EA	1											
PAOZZ	6145-214-1770	BRAID, WIRE NO-REF-DESIG TINNED COPPER . 3-14 IN ID 1230 (92194) ACF,ACG,ACH	FT	15											
PAOZZ	7920-291-5812	BRAID, WIRE NO-REF-DESIG TINNED COPPER . 1 IN W X 0-047 THK 5049 (70903) ACF,ACG,ACH	FT	9											
PAOZZ	5995-164-7902	BRUSH, CLEANING NO-REF-DESIG 8 IN LG ... 4211A (82208) ACF,ACG,ACH	EA	1											
PAOZZ	5995-164-7692	CABLE ASSEMBLY, POWER, ELECTRICAL W108 4 FT LG SCC34601 (80063) ACF,ACG,ACH	EA	1											W108
PAOZZ	5995-170-7943	CABLE ASSEMBLY, POWER, ELECTRICAL W1... 13 FT LG CD763 (80058) ACF,ACG,ACH	EA	1											W1
PAOZZ	5995-170-7929	CABLE ASSEMBLY, POWER, ELECTRICAL W2... POWER CABLE ASSEMBLY 13 FT CX1165U (80058) ACF,ACG,ACH	EA	2											W2
PAOZZ	5995-170-8780	CABLE ASSEMBLY, POWER, ELECTRICAL W3... POWER CABLE ASSEMBLY 50 FT CX1166U (80058) ACF,ACG,ACH	EA	2											W3
PAOZZ	5995-170-8773	CABLE ASSEMBLY, POWER, ELECTRICAL NO-REF- DESIG SPECIAL PURPOSE CABLE ASSEMBLY 3- 10-2-2 CX1200U (80058) ACF,ACG,ACH	EA	2											
PAOZZ	5995-160-59540	CABLE ASSEMBLY, RADIO FREQUENCY W14 5- 6 CG67AHQ2 (80058) ACF,ACG,ACH	EA	2											W14
PAOZZ	5995-238-3414	CABLE ASSEMBLY, RADIO FREQUENCY NO-REF-... DESIG 6 FT LG CG389AU (80058) ACF,ACG,ACH	EA	1											
PAOZZ	5995-259-9671	CABLE ASSEMBLY, RADIO FREQUENCY NO-REF-... DESIG 3 FT LG CG390U (80058) ACF,ACG,ACH	EA	1											
PAOZZ	5995-542-6243	CABLE ASSEMBLY, RADIO FREQUENCY NO-REF-... DESIG 17-11 CG390U (80058) ACF,ACG,ACH	EA	1											

(1) SHR CODE	(2) FEDERAL STOCK NUMBER	(3) DESCRIPTION REFERENCE NUMBER & MFR. CODE USABLE ON CODE	(4) UNIT OF MEAS	(5) QTY INC IN UNIT	(6) 30-DAY GS MAINT ALLOWANCE			(7) 90-DAY GS MAINT ALLOWANCE			(8) 1-YR ALY PER 100 EQUIP CITYCY	(9) DEPOT MAINT ALY PER 100 EQUIP	(10) ILLUSTRATION	
					(a)	(b)	(c)	(a)	(b)	(c)			(a)	(b)
					1-20	21-50	51-100	1-20	21-50	51-100			FIGURE NO.	ITEM NO.
PAOZZ	5995-272-9111	CABLE ASSEMBLY, RADIO FREQUENCY NO-REF-... DESIG RF CABLE ASSEMBLY NO. CG-557A/U 75 FT LG SCD22040 (80063) ACF,ACG,ACM	EA	1										
PAOZZ	5995-272-9144	CABLE ASSEMBLY, RADIO FREQUENCY NO-REF-... DESIG RF CABLE ASSEMBLY NO. CG-557A/U 300 FT LG SCD22040 (80063) ACF,ACG,ACM	EA	2										
PAOZZ	5995-272-9130	CABLE ASSEMBLY, RADIO FREQUENCY W17 RF. CABLE ASSEMBLY CG558AU 30-3-4 IN LG SCD22037 (80063) ACF,ACG,ACM	EA	1										W17
PAOZZ	5995-284-4679	CABLE ASSEMBLY, RADIO FREQUENCY NO-REF-... DESIG RF CABLE ASSEMBLY 6 FT CG562AU (80050) ACF,ACG,ACM	EA	2										
PAOZZ	5995-162-7141	CABLE ASSEMBLY, SPECIAL PURPOSE, ELECTRI... CAL NO-REF-DESIG 46 IN LG SCD2306 (80063) ACF	EA	2										
PAOZZ	5995-164-6494	CABLE ASSEMBLY, SPECIAL PURPOSE, ELECTRI... CAL W7 14 FT 9 IN LG SCD27457 (80063) ACF,ACG,ACM	EA	1										W7
PAOZZ	5995-161-4670	CABLE ASSEMBLY, SPECIAL PURPOSE, ELECTRI... CAL NO-REF-DESIG 7 FT 4 IN LG CX955TRA7 (80050) ACF	EA	2										
PAOZZ	5995-164-6590	CABLE ASSEMBLY, SPECIAL PURPOSE, ELECTRI... CAL NO-REF-DESIG 6 FT 4 IN LG CX956TRA7 (80050) ACF	EA	1										
PAOZZ	5995-161-4673	CABLE ASSEMBLY, SPECIAL PURPOSE, ELECTRI... CAL NO-REF-DESIG 6 FT CX957TRA7 (80050) ACF	EA	1										
PAOZZ	5995-163-1740	CABLE ASSEMBLY, SPECIAL PURPOSE, ELECTRI... CAL NO-REF-DESIG 6 FT 4 IN LG CX958TRA7 (80050) ACF	EA	1										
PAOZZ	5995-163-0035	CABLE ASSEMBLY, SPECIAL PURPOSE, ELECTRI... CAL NO-REF-DESIG 6 FT 4 IN LG CX959TRA7 (80050) ACF	EA	1										
PAOZZ	5995-163-1742	CABLE ASSEMBLY, SPECIAL PURPOSE, ELECTRI... CAL W106 CORD CX961TRA7 4FT W/RED BAND SCC34400 (80063) ACF,ACG,ACM	EA	1										W106
PAOZZ	5995-163-1741	CABLE ASSEMBLY, SPECIAL PURPOSE, ELECTRI... CAL NO-REF-DESIG CORD CX961TRA7 4 W/BUE BAND SCC34400 (80063) ACF,ACG,ACM	EA	1										
PAOZZ	5995-752-2487	CABLE ASSEMBLY, SPECIAL PURPOSE, ELECTRI... CAL W0 SPECIAL PURPOSE CORD ASSEMBLY NO. CX-1120/U 4 FT 6 IN LG SCD22489 (80063) ACF,ACG,ACM	EA	1										W0
PAOZZ	5995-237-8038	CABLE ASSEMBLY, SPECIAL PURPOSE, ELECTRI... CAL W9 SPECIAL PURPOSE CABLE ASSEMBLY CX1150U SCD122674 (80063) ACF,ACG,ACM	EA	1										W9
PAOZZ	5995-237-8037	CABLE ASSEMBLY, SPECIAL PURPOSE, ELECTRI... CAL NO-REF-DESIG SPECIAL PURPOSE, CABLE CONTINUED	EA	2										

SECTION II

TM11-5820-202-34P

(1) SMR CODE	(2) FEDERAL STOCK NUMBER	(3) DESCRIPTION REFERENCE NUMBER & MPE CODE USABLE ON CODE	(4) UNIT OF MEAS	(5) QTY INC IN UNIT	(6) 30-DAY BS MAINT ALLOWANCE			(7) 30-DAY GS MAINT ALLOWANCE			(8) 1-YR ALY PER 100 EQUIP CNTGCT	(9) DEPOT MAINT ALY PER 100 EQUIP	(10) ILLUSTRATION	
					(a)	(b)	(c)	(a)	(b)	(c)			(a)	(b)
					1-20	21-50	51-100	1-20	21-50	51-100			FIGURE NO.	ITEM NO.
		CONTINUED												
PAOZZ	5995-170-7919	CAL W106 CORD CH961TRAT 4FT W/RED BAND SCD22034A (80063) ACF,ACG,ACH CABLE ASSEMBLY, SPECIAL PURPOSE, ELECTRI..	EA	1								5	W11	
PAOZZ	5995-228-4334	CAL W11 SPECIAL PURPOSE CABLE ASSEMBLY CX1192U 4 FT SCD22630 (80063) ACF,ACG,ACH CABLE ASSEMBLY, SPECIAL PURPOSE, ELECTRI..	EA	1								5		
PAOZZ	5995-295-8175	CAL NO-REF-DESIG ELECTRICAL SPECIAL PURPOSE CABLE ASSEMBLY CX1050U 3 FT SCB105000 (80063) ACF,ACG,ACH CABLE ASSEMBLY, SPECIAL PURPOSE, ELECTRI..	EA	2								5		
PAOZZ	5995-256-9968	CAL NO-REF-DESIG SPECIAL CABLE ASSEMBLY CX1851U (80050) ACF,ACG,ACH CABLE ASSEMBLY, POWER, ELECTRICAL W5... CABLE ASSEMBLY SPECIAL PURPOSE ELECTRICAL CX1939U 5-3-7-8	EA	2								5	W5	
PAFZZ	5910-762-2945	SCC08578 (80063) ACF,ACG,ACH CAPACITOR, FIXED, MICADIELECTRIC NO-REF- DESIG 470 MUF P0RMSPT 500 VDCW	EA	2								3	7	
PAOHD	7110-408-0217	CW19FD471G03 (81349) ACF,ACG,ACH CHAIR NO-REF-DESIG W/O ARMS	EA	2								5		
PAOHD	7105-141-5546	1092CB (79906) ACF,ACG,ACH CHAIR NO-REF-DESIG W/O ARMS	EA	1								5		
PAOZZ	5925-930-5558	674 (02860) ACF,ACG,ACH CIRCUIT BREAKER NO-REF-DESIG AIR, DPST . 20 AMP 120/240 V AC 60 CYC	EA	1								5	3	
PAOZZ	5935-259-9828	C668046 (14933) ACF CLAMP, ELECTRICAL NO-REF-DESIG.....	EA	23								3		
PAOZZ	5935-688-4026	AN3057-6 (80059) ACF,ACG,ACH CLAMP, ELECTRICAL NO-REF-DESIG.....	EA	2								3		
PAOZZ	5935-223-0572	AN3057-8 (80059) ACF,ACG,ACH CLAMP, ELECTRICAL NO-REF-DESIG.....	EA	2								3		
PAOZZ	5940-295-6041	AN3057-12 (80059) ACF,ACG,ACH CLIP, ELECTRICAL NO-REF-DESIG FERRULE... TYPE	EA	2								3		
PAOZZ	5920-258-2471	128003 (75915) ACF,ACG,ACH CLIP, ELECTRICAL NO-REF-DESIG FERRULE... TYPE	EA	1								3		
PAOZZ	7520-281-5918	128009 (75915) ACF,ACG,ACH CLIPBOARD NO-REF-DESIG 12-1/2 IN LG X 9. IN W	EA	1								3		
PAOZZ	5935-196-4689	CT112 (94297) ACF,ACG,ACH CONNECTOR, ADAPTER NO-REF-DESIG.....	EA	5								3		
PAOZZ	5935-196-4689	M359 (80063) ACF CONNECTOR, ADAPTER NO-REF-DESIG.....	EA	1								3		
PAOZZ	5935-295-5449	M359 (80063) ACF,ACG,ACH CONNECTOR, ADAPTER NO-REF-DESIG.....	EA	2								3		
PAFZZ	5935-248-9499	PL258 (80063) ACF,ACG,ACH CONNECTOR, ADAPTER NO-REF-DESIG ADAPTER	EA	3								3		
PAFZZ	5935-192-4760	UG179U (80059) ACF,ACG,ACH CONNECTOR, PLUG ELECTRICAL NO-REF-DESIG.. PJ059B (80058) ACF,ACG,ACH	EA	11								3		

SECTION II

TM 11-5820-202-34P

(1) MFR CODE	(2) FEDERAL STOCK NUMBER	(3) DESCRIPTION REFERENCE NUMBER & MFR. CODE USABLE ON CODE		(4) UNIT GP MSAS	(5) QTY INC IN UNIT	(6) 20-DAY GS MAINT ALLOWANCE			(7) 30-DAY GS MAINT ALLOWANCE			(8) 1-YR ALS PER 100 EQUIP CHGCT	(9) DEPOT MAINT ALS PER 100 EQUIP	(10) ILLUSTRATION		
						(a)	(b)	(c)	(a)	(b)	(c)			(a)	(b)	
						1-20	21-30	31-60	1-20	21-30	31-60			FIGURE NO.	ITEM NO.	
PAFZZ	5935-186-9858	CONNECTOR, PLUG ELECTRICAL NO-REF-DESIG.. PI 114 (80058)	ACF	EL	2											
PAFZZ	5935-149-3981	CONNECTOR, PLUG ELECTRICAL NO-REF-DESIG.. PL259A (80058)	ACF,ACG,ACH	EA	15											
PAFZZ	5935-149-3984	CONNECTOR, PLUG ELECTRICAL NO-REF-DESIG.. UG09U (80058)	ACF,ACG,ACH	EA	5											
PAFZZ	5935-149-4236	CONNECTOR, PLUG ELECTRICAL NO-REF-DESIG.. UG210U (80058)	ACF,ACG,ACH	EA	4											
PAFZZ	5935-258-7940	CONNECTOR, PLUG ELECTRICAL NO-REF-DESIG.. 2 RD FEMALE COMT POL STRT TYPE 4 IN LG EXCLUDING PROTRUDING COMTUS X 3-1-4 IN W X 2 1-8 IN H	ACF,ACG,ACH	EA	2											
PAFZZ	5935-231-1165	CONNECTOR, PLUG ELECTRICAL NO-REF-DESIG.. 2 RD MALE COMTS POL STRT TYPE 4-3-8 IN LG X 2-5-8 IN DIA	ACF,ACG,ACH	EA	4											
PAFZZ	5935-149-3563	CONNECTOR, PLUG ELECTRICAL NO-REF-DESIG.. 2 CURVED FEMALE COMTS POL STRT TYPE 1- 25/32 IN LG X 1-43-64 IN DIA EXCLUDING CABLE CLAMP	ACF,ACG,ACH	EA	2											
PAFZZ	5935-201-8474	CONNECTOR, PLUG ELECTRICAL NO-REF-DESIG.. 2 MALE Y SHAPE COMT NOT POL 1.218 IN LG X 1.671 IN DIA	ACF,ACG,ACH	EA	2											
PAFZZ	5935-280-2444	CONNECTOR, PLUG ELECTRICAL NO-REF-DESIG.. AN3108B14S2P (80059)	ACF,ACG,ACH	EA	3											
PAFZZ	5935-283-2883	CONNECTOR, PLUG ELECTRICAL NO-REF-DESIG.. AN3108B14S7S (80059)	ACF,ACG,ACH	EA	4											
PAFZZ	5935-149-4021	CONNECTOR, PLUG ELECTRICAL NO-REF-DESIG.. 7572 (83315)	ACF,ACG,ACH	EA	6											
PAFZZ	5935-789-0133	CONNECTOR, PLUG ELECTRICAL NO-REF-DESIG.. 3 CURVED FEMALE POL COMTS STRT TYPE 1-1- 2 IN DIA X 2 IN LG	ACF,ACG,ACH	EA	4											
PAFZZ	5935-283-3849	CONNECTOR, PLUG ELECTRICAL NO-REF-DESIG.. AN3108A16S6S (80059)	ACG,ACH	EA	2											
PAFZZ	5935-404-7873	CONNECTOR, PLUG ELECTRICAL NO-REF-DESIG.. 4 RD MALE COMTS POL 90 DEGREE ANGLE TYPE 2-1-8 IN LG X 1-25-32 IN W X 1-5-8 IN DIA	ACF,ACG,ACH	EA	6											
PAFZZ	5935-259-7411	CONNECTOR, PLUG ELECTRICAL NO-REF-DESIG.. AN3108B14S2S (81350)	ACF,ACG,ACH	EA	6											
PAFZZ	5935-404-7881	CONNECTOR, PLUG ELECTRICAL NO-REF-DESIG.. AN3108A14S3P (80059)	ACF,ACG,ACH	EA	2											
PAFZZ	5935-280-2834	CONNECTOR, PLUG ELECTRICAL NO-REF-DESIG.. AN3108A14S5S (80059)	ACF,ACG,ACH	EA	2											
PAFZZ	5935-666-1792	CONNECTOR, PLUG ELECTRICAL NO-REF-DESIG.. 8 RD FEMALE COMTS POL STRT TYPE RD BODY2 IN LG X 1-15-32 IN DIA 79-08F1 (02660)	ACF,ACG,ACH	EA	2											

SECTION II

TM 11-5820-202-34P

(1) WAR CODE	(2) FEDERAL STOCK NUMBER	(3) DESCRIPTION REFERENCE NUMBER & MFR. CODE USABLE ON CODE	(4) UNIT OF MEAS.	(5) QTY REQ IN UNIT	(6) 30-DAY DS MAINT ALLOWANCE			(7) 30-DAY GS MAINT ALLOWANCE			(8) 1-YR ALY PER 100 EQUIP CONTCY	(9) DDPCT MAINT ALY PER 100 EQUIP	(10) ILLUSTRATION	
					(a)	(b)	(c)	(a)	(b)	(c)			(a)	(b)
					1-20	21-50	51-100	1-20	21-50	51-100			FIGURE NO.	ITEM NO.
PAFZZ	5935-259-5939	CONNECTOR, PLUG ELECTRICAL NO-REF-DESIG.. 8 RD MALE COMTS STAT 2 IN LG X 1-15-32 IN DIA 79-08R (02040) ACF,ACG,ACH	EA	4								3		
PAFZZ	5935-259-9775	CONNECTOR, PLUG ELECTRICAL NO-REF-DESIG.. AN310000027P (00059) ACF,ACG,ACH	EA	1								3		
PAFZZ	5935-259-5972	CONNECTOR, PLUG ELECTRICAL NO-REF-DESIG.. AN310002027S (00059) ACF,ACG,ACH	EA	1								3		
PAOZZ	4820-498-4219	CORD NO-REF-DESIG..... FC5710 (01349) ACF,ACG,ACH	FT	50								1		
PAOZZ	5815-404-8438	COVER NO-REF-DESIG..... B6190 (00050) ACF,ACG,ACH	EA	2								2		
PAOZZ	5815-498-7933	COVER NO-REF-DESIG..... B6199 (00050) ACF,ACG,ACH	EA	1								2		
PAOZZ	5815-498-7958	COVER, TELETYPEWRITER REPERFORATOR..... RG200 (00050) ACF,ACG,ACH	EA	1								9		
PAOZZ	5970-285-0123	INSULATOR, 90ML NO-REF-DESIG STEATITE... 2-23-32 IN LG X 3-1-4 IN DIA A9232 (73420) ACF,ACG,ACH	EA	1								1		
PAOZZ	5970-405-8971	INSULATOR, SPR. DER NO-REF-DESIG..... STEATITE GRADE L-4, BROWN GLAZED 4 IN LG X 3-4 IN DIA L422 (01349) ACF,ACG,ACH	EA	6								1		
PAFZZ	5935-194-3081	JACK, TELEPHONE NO-REF-DESIG..... JJ026 (00050) ACF,ACG,ACH	EA	7								3		
PAOHD	5805-171-3370	KEY, TELEGRAPH NO-REF-DESIG..... J45 (00043) ACF,ACG,ACH	EA	1								5		
PAOZZ	6240-267-2860	LAMP, INCANDESCENT NO-REF-DESIG LAMP.... 125 V 15 W INTERMEDIATE SCREW BASE 1ST7N125 (03530) ACF,ACG,ACH	EA	1								50		
PAOZZ	6240-155-8634	LAMP, INCANDESCENT 12 LAMP, 120 V, 50- W NEG SCREW BASE 50ARS (00100) ACF,ACG,ACH	EA	1								50	12	
PAOHD	5820-199-8842	MAST SECTION NO-REF-DESIG..... MS49 (00050) ACF,ACG,ACH	EA	1								3		
PAOHD	5820-155-8131	MAST SECTION NO-REF-DESIG..... MS50 (00050) ACF,ACG,ACH	EA	1								3		
PAOHD	5820-155-8130	MAST SECTION NO-REF-DESIG..... MS51 (00050) ACF,ACG,ACH	EA	1								3		
PAOHD	5820-155-8129	MAST SECTION NO-REF-DESIG..... MS52 (00050) ACF,ACG,ACH	EA	1								3		
PAOHD	5820-156-1055	MAST SECTION NO-REF-DESIG..... MS53 (00050) ACF,ACG,ACH	EA	1								3		
PAOZZ	5985-199-8831	MAST SECTION NO-REF-DESIG..... MS116 (00050) ACF,ACG,ACH	EA	4								3		
PAOZZ	5820-199-8843	MAST SECTION NO-REF-DESIG..... MS117 (00050) ACF,ACG,ACH	EA	2								3		
PAOZZ	5985-238-7474	MAST SECTION NO-REF-DESIG..... MS118 (00050) ACF,ACG,ACH	EA	2								3		
PANZZ	5340-092-1106	MOUNT, RESILIENT NO-REF-DESIG 3 IN DU X. 1-1-2 IN H 7235V (01860) ACF,ACG,ACH	EA	6								1		

SECTION II

TM11-5820-202-34P

(1) WIR CODE	(2) FEDERAL STOCK NUMBER	(3) DESCRIPTION REFERENCE NUMBER & MFR. CODE USABLE ON CODE	(4) UNIT OF MEAS	(5) QTY INC IN UNIT	(6) 30-DAY GS MAINT ALLOWANCE			(7) 30-DAY GS MAINT ALLOWANCE			(8) 1-YR ALN PER 100 EQUIP CHNGCT	(9) DEPOT MAINT ALN PER 100 EQUIP	(10) ILLUSTRATION	
					(a)	(b)	(c)	(a)	(b)	(c)			(a)	(b)
					1-20	21-50	51-100	1-20	21-50	51-100			FIGURE NO.	ITEM NO.
PAOZZ	5820-392-9654	PAD, SILENCING NO-REF-DESIG FELT PAD ... 17-1-4 IN X 17-1-8 IN X 1-2 IN 8537 (70367) ACF,ACG,ACH	EA	2								5		
PAOZZ	5820-237-8438	RACK NO-REF-DESIG..... SCC27979 (80063) ACF,ACG,ACH	EA	2								2		
PAOZZ	5975-187-5295	ROD, GROUND NO-REF-DESIG..... GP26 (80058) ACF,ACG,ACH	EA	1								3		
PAOZZ	5940-266-2034	SPLICE, CONDUCTOR NO-REF-DESIG..... COMPRESSION ACCOM 1 CONTINUOUS AND 1 BRANCH MAX NO. 10ANG KS90 (89922) ACF,ACG,ACH	EA	6								4		
PAOZZ	5820-497-8792	STRAP, RETAINING NO-REF-DESIG GROM AND. HAMMER RETAINING STRAP SCB27964 (80063) ACF,ACG,ACH	EA	2								2		
PAOZZ	5410-408-43347	STRAP, RETAINING NO-REF-DESIG HOLDS..... FOLDING CHAIR SCC19825GR1 (80063) ACF,ACG,ACH	EA	2								2		
PAOZZ	5815-219-6401	STRAP, RETAINING NO-REF-DESIG HOLD GND.. ROD IN STORAGE POSITION B AND W 26512 (99777) ACF,ACG,ACH	EA	1								2		
PAOZZ	5340-498-9541	STRAP, RETAINING NO-REF-DESIG HOLD LANCE POLES SCC27982GR2 (80063) ACF,ACG,ACH	EA	4								2		
PAOZZ	5985-497-8791	STRAP, RETAINING NO-REF-DESIG MAST..... RETAINING STRAP B AND W 251 (99777) ACF,ACG,ACH	EA	3								2		
PAOZZ	6145-128-8695	WIRE NO-REF-DESIG BARE WIRE	FT	1000								2		
PAOZZ	6145-160-5114	14ANGW1 (81349) ACF,ACG,ACH WIRE NO-REF-DESIG 1 COND.....	FT	2								2		
PAOZZ	6145-226-8812	14ANGW128 (81349) ACF,ACG,ACH WIRE NO-REF-DESIG WIRE, ELECTRICAL WDITT ON 1-2 MILE REEL WDITT (80058) ACF,ACG,ACH	EA	2								2		
PAFHD	6625-618-6723	GROUP 0002 RADIO TELETYPEWRITER CONTROL C-808/GRC-26A AMMETER M1 DC 100-0-100 MA	EA	1								3	41	
PAFZZ	5815-521-6589	BAR, LOCKING NO-REF-DESIG LOCKS HANDLE.. TO SW ARM 738616 (26916) BMC,BMD,BME	EA	1								4		
PAFZZ	5930-244-8949	BAR, ACTUATOR, ELECTRICAL NO-REF-DESIG... U/W LOCKING BAR 308202 (26916) BMC,BMD,BME	EA	1								4		
PAOZZ	5815-356-3903	CASE, RADIO TELETYPEWRITER CONTRL NO-... REF-DESIG CY9016RC264 (80058) BMC,BMD,BME	EA	1								2		
PAFZZ	6145-669-6662	CABLE, SPECIAL PURPOSE, ELECTRICAL NO-... REF-DESIG TO BE REQUISITIONED IN MIN QTY OF 35 FT OR MULTIPLE THEREOF C0119A (80063) BMC,BMD,BME	FT	35								5		
PAFZZ	5910-583-1934	CAPACITOR, FIXED, ELECTROLYTIC C8 2... SECTS, 30 MF EA SECT 350 VDCW CE42C300P (81349) BME	EA	1								3	7 CB	

SECTION II

TM11-5820-202-34P

(1) SMB CODE	(2) FEDERAL STOCK NUMBER	(3) DESCRIPTION REFERENCE NUMBER & NFB. CODE USABLE ON CODE	(4) UNIT OF MEAS	(5) QTY INC IN UNIT	(6) 30-DAY DS MAINT ALLOWANCE			(7) 30-DAY GS MAINT ALLOWANCE			(8) 1-YR ALY PER 100 EQUIP CHNGCY	(9) DEPOT MAINT ALY PER 100 EQUIP	(10) ILLUSTRATION	
					(a)	(b)	(c)	(a)	(b)	(c)			(a)	(b)
					1-20	21-50	51-100	1-20	21-50	51-100			FIGURE NO.	ITEM NO.
PAFZZ	5910-581-2552	CAPACITOR, FIXED, ELECTROLYTIC C8 2... SECT, 25 MF PER SECTION 300 VDCW CE42C250N (81349) BMC,BMD,BME	EA	1	0	0	0	0	0	0	0	3	7	C8
PAFZZ	5910-660-7504	CAPACITOR, FIXED, ELECTROLYTIC C1 2... SECT, 150 MF PER SECT 150 VDCW CE42C151J (81349) BMC,BMD,BME	EA	1	0	0	0	0	0	0	0	3	7	C1
PAFZZ	5910-101-5766	CAPACITOR, FIXED, NICA DIELECTRIC C2... 10000 MWF PDRM10PCT 300 VDCW CM35C103K (81349) BMC,BMD,BME	EA	6	0	0	0	0	0	0	0	3		C2
PAFZZ	5910-101-5766	CAPACITOR, FIXED, NICA DIELECTRIC C3... 10000 MWF PDRM10PCT 300 VDCW CM35C103K (81349) BMC,BMD,BME	EA	REF	0	0	0	0	0	0	0	3		C3
PAFZZ	5910-101-5766	CAPACITOR, FIXED, NICA DIELECTRIC C4... 10000 MWF PDRM10PCT 300 VDCW CM35C103K (81349) BMC,BMD,BME	EA	REF	0	0	0	0	0	0	0	3		C4
PAFZZ	5910-101-5766	CAPACITOR, FIXED, NICA DIELECTRIC C6... 10000 MWF PDRM10PCT 300 VDCW CM35C103K (81349) BMC,BMD,BME	EA	REF	0	0	0	0	0	0	0	3		C6
PAFZZ	5910-101-5766	CAPACITOR, FIXED, NICA DIELECTRIC C5... 10000 MWF PDRM10PCT 300 VDCW CM35C103K (81349) BMC,BMD,BME	EA	REF	0	0	0	0	0	0	0	3		C5
PAFZZ	5910-101-5766	CAPACITOR, FIXED, NICA DIELECTRIC C7... 10000 MWF PDRM10PCT 300 VDCW CM35C103K (81349) BMC,BMD,BME	EA	REF	0	0	0	0	0	0	0	3		C7
PAFZZ	5820-254-2941	CLAMP, ELECTRICAL NO-REF-DESIG SECURES.. RELAY B AND W 8-310-7A (99777) BMC	EA	1	0	0	0	0	0	0	0	3		
PAFZZ	5820-254-2941	CLAMP, ELECTRICAL NO-REF-DESIG SECURES.. RELAY 768702 (26916) BMD	EA	1	0	0	0	0	0	0	0	3		
PAFZZ	5820-237-1468	COIL, RADIO FREQUENCY L2..... MOSH SUPPRESSOR UNSHIELDED 1.5 MH 80 MA 8-55 (99777) BMC,BMD,BME	EA	1	0	0	0	0	0	0	0	3		L2
PAFZZ	5935-1498-3419	CONNECTOR, RECEPTACLE, ELECTRICAL J2 3 RD MAIL CCNT P3L 3102-1457P (80059) BMC,BMD,BME	EA	2	0	0	0	0	0	0	0	3	8	J2
PAFZZ	5935-149-3419	CONNECTOR, RECEPTACLE, ELECTRICAL J14 3 RD MAIL CCNT PDL 3102-1457P (80059) BMC,BMD,BME	EA	REF	0	0	0	0	0	0	0	3		J14
PAFZZ	5935-149-3462	CONNECTOR, RECEPTACLE, ELECTRICAL J10 4 RD MALE CONT PDL AN3102-1452P (80059) BMC,BMD,BME	EA	3	0	0	0	0	0	0	0	3	8	J10
PAFZZ	5935-149-3462	CONNECTOR, RECEPTACLE, ELECTRICAL J12 4 RD MALE CONT PDL AN3102-1452P (80059) BMC,BMD,BME	EA	REF	0	0	0	0	0	0	0	3	8	J12
PAFZZ	5935-149-3462	CONNECTOR, RECEPTACLE, ELECTRICAL J13 4 RD MALE CONT PDL AN3102-1452P (80059) BMC,BMD,BME	EA	REF	0	0	0	0	0	0	0	3	8	J13
PAFZZ	5935-149-3427	CONNECTOR, RECEPTACLE, ELECTRICAL J11 5 RD MALE CONT PDL AN3102-1455P (80059) BMC,BMD,BME	EA	1	0	0	0	0	0	0	0	3	8	J11
PAFZZ	5935-259-0030	CONNECTOR, RECEPTACLE, ELECTRICAL J15 3 CONTINUED	EA	1	0	0	0	0	0	0	0	3	8	J15

(1) S&R CODE	(2) FEDERAL STOCK NUMBER	(3) DESCRIPTION REFERENCE NUMBER & MFR. CODE USABLE ON CODE	(4) UNIT OF MEAS	(5) QTY INC IN UNIT	(6) 30-DAY DS MAINT ALLOWANCE			(7) 30-DAY GS MAINT ALLOWANCE			(8) 1-YR ALY PER 100 EQUIP CNTGTY	(9) DEPOT MAINT ALY PER 100 EQUIP	(10) ILLUSTRATION	
					(a)	(b)	(c)	(a)	(b)	(c)			(a)	(b)
					1-20	21-50	51-100	1-20	21-50	51-100			FIGURE NO.	ITEM NO.
PAFZZ	5935-149-3419	CONNECTOR, RECEPTACLE, ELECTRICAL J14 3 NS3104A22-275 (96906) BMC, BMD, BME	EA	REF								3		J14
PAFZZ	5995-823-2136	CORD CO-307 NO-REF-DESIG 4 FT LG TO BE... REQUISITIONED IN MIN QTY OF 7 FT OR MULTIPLE THEREOF SCD2019 (80043) BMC, BMD, BME	EA	7								1		
PAOZZ	5960-262-0218	ELECTRON TUBE NO-REF-DESIG..... 5Y3MG (81390) BMC, BMD, BME	EA	2								100		
PAFZZ	5820-351-4029	FOOT, MOUNTING NO-REF-DESIG SUPPORTS.... CHASSIS CYLINDRICAL 6781720 (26916) BMC, BMD, BME	EA	2								4		
PAOZZ	5920-284-4153	FUSE, CARTRIDGE F1 LAMP..... 413001 (75915) BMC, BMD, BME	EA	1								50		F1
PAFZZ	5920-581-7957	FUSEHOLDER E5 FUSEPOST..... FHM19G (81349) BMC, BMD, BME	EA	1								3		E5
PAFZZ	5970-683-3763	INSULATOR PLATE NO-REF-DESIG PHONE JACK, MTG 881571 (26916) BMC, BMD, BME	EA	1								3		
PAFZZ	5970-688-8969	INSULATOR PLATE NO-REF-DESIG PHONE JACK, MTG 881572 (26916) BMC, BMD, BME	EA	1								3		
PAFZZ	5330-291-9959	INSULATOR, WASHER NO-REF-DESIG RD..... 8-36 (99777) BMC, BMD	EA	5								1		
PAFZZ	5935-192-4789	JACK J1..... JJ089 (80058) BMC, BMD, BME	EA	9								3	8	J1
PAFZZ	5935-192-4789	JACK J3..... JJ089 (80058) BMC, BMD, BME	EA	REF								3	8	J3
PAFZZ	5935-192-4789	JACK J4..... JJ089 (80058) BMC, BMD, BME	EA	REF								3	8	J4
PAFZZ	5935-192-4789	JACK J5..... JJ089 (80058) BMC, BMD, BME	EA	REF								3	8	J5
PAFZZ	5935-192-4789	JACK J6..... JJ089 (80058) BMC, BMD, BME	EA	REF								3	8	J6
PAFZZ	5935-192-4789	JACK J7..... JJ089 (80058) BMC, BMD, BME	EA	REF								3	8	J7
PAFZZ	5935-192-4789	JACK J8..... JJ089 (80058) BMC, BMD, BME	EA	REF								3	8	J8
PAFZZ	5935-192-4789	JACK J9..... JJ089 (80058) BMC, BMD, BME	EA	REF								3		J9
PAFZZ	5935-192-4789	JACK J16..... JJ089 (80058) BMC, BMD, BME	EA	REF								3		J16
PAFZZ	5935-194-3081	JACK NO-REF-DESIG..... JJ026 (80058) BMC, BMD, BME	EA	7								3		
PAOZZ	5355-160-6851	KNOB NO-REF-DESIG BAR W/CIR HUB..... HRP (42458) BMC, BMD, BME	EA	2								3		
PAOZZ	5355-160-6132	KNOB NO-REF-DESIG RD..... K848236-1 (23921) BMC, BMD, BME	EA	2								3		
PAOZZ	6240-155-8706	LAMP NO-REF-DESIG..... LMS2-47 (24446) BMC, BMD, BME	EA	2								100		
PAOZZ	6210-243-0073	LENS, INDICATOR LIGHT NO-REF-DESIG..... GREEN 93246-112 (72619) BMC, BMD, BME	EA	1								5		

SECTION II

TM11-5820-202-34P

(1) SAR CODE	(2) FEDERAL STOCK NUMBER	(3) DESCRIPTION REFERENCE NUMBER & MFR. CODE USABLE ON CODE	(4) UNIT OF MEAS.	(5) QTY INC IN UNIT	(6) 30-DAY DS MAINT ALLOWANCE			(7) 30-DAY GS MAINT ALLOWANCE			(8) 1-YR ALW PER 100 EQUIP CHRGCT	(9) DEPOT MAINT ALW PER 100 EQUIP	(10) ILLUSTRATION	
					(a)	(b)	(c)	(a)	(b)	(c)			(a)	(b)
					1-20	21-30	31-100	1-20	21-30	31-100			FIGURE NO.	ITEM NO.
PAOZZ	6210-299-3870	LENS, INDICATOR LIGHT NO-REF-DESIG..... AMBER DPH (72619) BNC,BND	EA	1	"	"	"	"	"	"	"	5		
PAOZZ	6210-404-9871	LENS, INDICATOR LIGHT NO-REF-DESIG RED . 93-111 (72619) BME	EA	1	"	"	"	"	"	"	"	5		
PAFZZ	6210-635-6061	LIGHT, INDICATOR I7 W/AMBER LENS 932210-113 (72619) BNC,BND	EA	1	"	"	"	"	"	"	"	5	12	
PAFZZ	6210-186-7973	LIGHT, INDICATOR I1 W/GREEN LENS 932210-112 (72619) BNC,BND	EA	1	"	"	"	"	"	"	"	5	11	
PAFZZ	6210-570-5572	LAMPHOLDER NO-REF-DESIG FOR T-3-1/4..... LAMP 932210-1 (72619) BME	EA	2	"	"	"	"	"	"	"	5		
PAFZZ	5345-405-1581	MOUNT VIBRATION NO-REF-DESIG SHOCK..... MOUNT M448 (80063) BNC,BND,BME	EA	4	"	"	"	"	"	"	"	1		
PANZZ	9905-205-1044	PLATE, IDENTIFICATION NO-REF-DESIG FRONT PANEL OVERLAY 70306 (24916) BNC,BND,BME	EA	1	"	"	"	"	"	"	"	3		
PAFZZ	5935-192-4760	PLUG NO-REF-DESIG..... PJ0990 (80050) BNC,BND,BME	EA	7	"	"	"	"	"	"	"	3		
PAFZZ	5940-194-7724	POST, BINDING E1 BINDING POST TM149 .. SC0530 (80063) BNC,BND,BME	EA	4	"	"	"	"	"	"	"	1	E1	
PAFZZ	5940-194-7724	POST, BINDING E2 BINDING POST TM149 .. SC0530 (80063) BNC,BND,BME	EA	REF	"	"	"	"	"	"	"	1	E2	
PAFZZ	5940-194-7724	POST, BINDING E3 BINDING POST TM149 .. SC0530 (80063) BNC,BND,BME	EA	REF	"	"	"	"	"	"	"	1	E3	
PAFZZ	5940-194-7724	POST, BINDING E4 BINDING POST TM149 .. SC0530 (80063) BNC,BND,BME	EA	REF	"	"	"	"	"	"	"	1	E4	
PAFZZ	5940-258-1839	POST, BINDING NO-REF-DESIG RETAINS NO. 8 ALLEN WRENCH 6697 (80629) BNC,BND,BME	EA	1	"	"	"	"	"	"	"	1		
PAFZZ	5950-243-5297	REACTOR L1..... 15941 (80089) BNC,BND,BME	EA	1	"	"	"	"	"	"	"	2	L1	
PAFZZ	5950-244-5179	REACTOR L3..... 15940 (80089) BNC,BND,BME	EA	1	"	"	"	"	"	"	"	2	L3	
PAFZZ	6130-284-0208	RECTIFIER, METAL CR1 SELENIUM Q2B1N3C (77638) BNC,BND	EA	1	"	"	"	"	"	"	"	2	CR1	
PAFZZ	6130-284-0208	RECTIFIER, METALLIC L3 SELENIUM 26 V. AC INPUT 19 V DC, 0.6 AMP OUTPUT 2-7-8 IN LG X 1-1-2 IN W X 2-1-4 IN H Q2B1N9C (77638) BME	EA	1	"	"	"	"	"	"	"	3	L3	
PAOZZ	5945-754-5798	RELAY ARMATURE O1..... 72J02160TGTCP (78277) BNC,BND,BME	EA	1	"	"	"	"	"	"	"	3	O1	
PAFZZ	5905-114-4959	RESISTOR, ADJUSTABLE, MW R12 500 OHM... PORN10PCT-50 W 0569 (44635) BND,BME	EA	1	"	"	"	"	"	"	"	3	R12	
PAFZZ	5905-237-6694	RESISTOR, ADJUSTABLE, MW R10 2000 OHM.. PORN5PCT 50 W 4-1-2 (75042) BNC,BND,BME	EA	1	"	"	"	"	"	"	"	3	R10	
PAFZZ	5905-264-7120	RESISTOR, FIXED, MW R2 28 OHM PORN5PCT 8 W RN30G280 (81349) BNC,BND,BME	EA	1	"	"	"	"	"	"	"	3	R2	

SECTION II

T M 1 1 - 5 8 2 0 - 2 0 2 - 3 4 P

(1) SMB CODE	(2) FEDERAL STOCK NUMBER	(3) DESCRIPTION REFERENCE NUMBER & UPR. CODE USABLE ON CODE	(4) UNIT OF MEAS.	(5) QTY INC IN UNIT	(6) 30-DAY DS MAINT ALLOWANCE			(7) 30-DAY GS MAINT ALLOWANCE			(8) 1-YR ALU PER 100 EQUIP CHGCT	(9) DEPOT MAINT ALU PER 100 EQUIP	(10) ILLUSTRATION	
					(a)	(b)	(c)	(a)	(b)	(c)			(a)	(b)
					1-20	21-30	31-100	1-20	21-30	31-100			FIGURE NO.	ITEM NO.
PAFZZ	5905-279-7259	RESISTOR, ADJUSTABLE, WW R12 500 OHM... PORMSPCT 35 W 40A120 (75042) BMC	EA	1	0	0	0	0	0	0	3	0	R12	
PAFZZ	5905-059-9234	RESISTOR, FIXED WW R7 36 OHM PORMIPCT. 1-3 W R01K36R00P (81349) BMC,BMD,BME	EA	1	0	0	0	0	0	0	3		R7	
PAFZZ	5905-175-7434	RESISTOR, FIXED, WW R1 1000 OHM..... PORMSPCT 8 W R029G102 (81349) BMC,BMD,BME	EA	2	0	0	0	0	0	0	3		R1	
PAFZZ	5905-175-7434	RESISTOR, FIXED, WW R8 1000 OHM..... PORMSPCT 8 W R029G102 (81349) BMC,BMD,BME	EA	REF	0	0	0	0	0	0	3		R8	
PAFZZ	5905-283-4075	RESISTOR, FIXED, WW R9 1000 OHM..... PORMSPCT 12 W R032G102 (81349) BMC,BMD	EA	1	0	0	0	0	0	0	3		R9	
PAFZZ	5905-100-7803	RESISTOR, FIXED, WW R9 1000 OHM..... PORM10PCT 25 W 0205 (44433) BME	EA	1	0	0	0	0	0	0	3		R9	
PAFZZ	5905-283-1705	RESISTOR, FIXED WW R6 1000 OHM..... PORMIPCT 1-3 W R016K10001 (81349) BMC,BMD,BME	EA	1	0	0	0	0	0	0	3		R6	
PAFZZ	5905-112-4530	RESISTOR, VARIABLE, WW R3 500 OHM..... PORM10PCT 2 W R0202S01K (81349) BMC,BMD,BME	EA	1	0	0	0	0	0	0	5		R3	
PAFZZ	5905-114-9952	RESISTOR, VARIABLE, WW R4 1000 OHM..... PORM10PCT 4W R030A1FK102AK (81349) BMC,BMD,BME	EA	2	0	0	0	0	0	0	5		R4	
PAFZZ	5905-114-9952	RESISTOR, VARIABLE, WW R11 1000 OHM..... PORM10PCT 4W R030A1FK102AK (81349) BMC,BMD,BME	EA	REF	0	0	0	0	0	0	5		R11	
PAFZZ	5905-108-9730	RESISTOR, VARIABLE, W W R5 5000 OHM... PORM10PCT 2 W R020A2S021K (81349) BMC,BMD,BME	EA	1	0	0	0	0	0	0	3		R5	
PAFZZ	5985-351-4722	RETAINER, SPRING NO-REF-DESIG..... M115 (81360) BMC,BMD	EA	2	0	0	0	0	0	0	3			
PAFZZ	5960-273-2460	RETAINER, ELECTRON TUBE NO-REF-DESIG..... ZTHAT (97983) BMC,BMD,BME	EA	2	0	0	0	0	0	0	3			
PAFZZ	5935-129-9358	SOCKET, ELECTRON TUBE X1..... TS101P01 (81349) BMC,BMD,BME	EA	4	0	0	0	0	0	0	3		X1	
PAFZZ	5935-129-93587	SOCKET, ELECTRON TUBE X2..... TS101P01 (81349) BMC,BMD,BME	EA	REF	0	0	0	0	0	0	3		X2	
PAFZZ	5930-356-2402	SWITCH, ROTARY S1 4 POLE, 2 POS 0-32 (76854) BMC,BMD,BME	EA	1	0	0	0	0	0	0	5		S1	
PAFZZ	5930-356-518-2401	SWITCH, ROTARY S2 4 POLE 3 POS 0-24 (76854) BMC,BMD,BME	EA	1	0	0	0	0	0	0	5		S2	
PAFZZ	5930-518-1929	SWITCH, TOGGLE S3 DPDT MS35059-15 (81349) BMC,BMD,BME	EA	1	0	0	0	0	0	0	5		S3	
PAFZZ	5930-188-7243	SWITCH, TOGGLE S4 SPST MS35050-9 (81349) BMC,BMD,BME	EA	3	0	0	0	0	0	0	5		S4	
PAFZZ	5930-188-7243	SWITCH, TOGGLE S7 SPST MS35050-9 (81349) BMC,BMD,BME	EA	REF	0	0	0	0	0	0	5		S7	
PAFZZ	5930-188-7243	SWITCH, TOGGLE S8 SPST MS35050-9 (81349) BMC,BMD,BME	EA	REF	0	0	0	0	0	0	5		S8	

SECTION II

TM11-5820-202-34P

(1) SNR CODE	(2) FEDERAL STOCK NUMBER	(3) DESCRIPTION REFERENCE NUMBER & MFR. CODE USABLE ON CODE		(4) UNIT OF MEAS	(5) QTY INC IN UNIT	(6) 30-DAY DS MAINT ALLOWANCE			(7) 30-DAY GS MAINT ALLOWANCE			(8) 3-YR ALY PER 100 EQUIP ENTCTY	(9) DEPOT MAINT ALY PER 100 EQUIP	(10) ILLUSTRATION	
						(a)	(b)	(c)	(a)	(b)	(c)			(a)	(b)
						1-20	21-50	51-100	1-20	21-50	51-100			FIGURE NO.	ITEM NO.
PAFZZ	5930-189-0791	SWITCH, TOGGLE S5 DPST	BNC, BMD, BME	EA	2	*	*	*	*	*	*				S5
PAFZZ	5930-1859-0791	SWITCH, TOGGLE S6 DPST	BNC, BMD, BME	EA	REF	*	*	*	*	*	*				S6
PAFZZ	5930-665-5807	SWITCH, TOGGLE S9 4 PDT NO OFF.....	BNC, BMD, BME	EA	1	*	*	*	*	*	*				S9
PAOZZ	5305-206-3392	MUNBSCREM NO-REF-DESIG FRONT PANEL.....	BME	EA	4	*	*	*	*	*	*				
PAFZZ	5950-234-1828	TRANSFORMER, POWER, STEP-DOWN T1 FIL..	BNC, BMD, BME	EA	1	*	*	*	*	*	*				T1
PAFZZ	5950-234-1828	TRANSFORMER, POWER, STEP-DOWN T1 1 PH.	BNC, BMD	EA	1	*	*	*	*	*	*			7	T1
PAFZZ	5950-231-5279	TRANSFORMER, POWER, STEP-UP T2.....	BME	EA	1	*	*	*	*	*	*				T2
PAFZZ	5950-231-5279	TRANSFORMER, POWER, STEP-DOWN AND STEP-UP T2 105, 115, 126 V, 50-60 CYC, 1 PH PRI	BNC, BMD	EA	1	*	*	*	*	*	*				T2
		SECONDARY 1 WDG 150 MA, 264 V CT, 2ND WDG													
		AMP, 5-1 V SECONDARY													
		CC85140 (80063)	BME												

SECTION IV.

T M 1 1 - 5 8 2 0 - 2 0 2 - 3 4 P

INDEX - FEDERAL STOCK NUMBER AND REFERENCE NUMBER
CROSS-REFERENCED TO FIGURE AND ITEM NUMBER

STOCK NUMBER	FIGURE NO.	ITEM NO.	STOCK NUMBER	FIGURE NO.	ITEM NO.
4001-400-4219			5935-149-3462	8	J13
4001-400-1392			5935-149-3553		
4001-400-9999			5935-149-3981		
4001-400-1106			5935-149-3984		
4001-400-1501			5935-149-4021		
4001-400-9541			5935-149-4234		
4001-400-4132			5935-188-9898		
4001-400-6031			5935-192-4760		
4001-400-4347			5935-192-4789		J9
4001-171-1170			5935-192-4789		J26
4001-356-1540			5935-192-4789	8	J1
4015-219-0401			5935-192-4789	8	J3
4015-306-3903			5935-192-4789	8	J4
4015-404-0430			5935-192-4789	8	J5
4015-498-7923			5935-192-4789	8	J6
4015-498-7928			5935-192-4789	8	J7
4015-521-6509			5935-192-4789	8	J8
4020-195-0129			5935-194-3081		
4020-195-0130			5935-194-6689		
4020-195-0131			5935-201-0474		
4020-195-1055			5935-223-0572		
4020-195-0842			5935-231-1165		
4020-199-1043			5935-247-6281		
4020-237-460		L2	5935-248-9499		
4020-237-0430			5935-258-7948		
4020-254-2941			5935-259-0030	8	J15
4020-251-4029			5935-259-5939		
4020-282-9454			5935-259-5972		
4020-404-2710			5935-259-7411		
4020-497-0596			5935-259-9775		
4020-497-0705			5935-259-9820		
4020-497-0792			5935-280-2444		
4020-099-9234		R7	5935-280-2834		
4020-100-7803		R9	5935-283-2803		
4020-108-9750		R5	5935-283-3049		
4020-112-4530		R3	5935-295-5449		
4020-114-4959	8	R12	5935-404-7873		
4020-114-9952		R4	5935-404-7881		
4020-114-9952		R11	5935-666-1792		
4020-175-7434		R1	5935-688-6026		
4020-175-7434		R8	5935-789-0133		
4020-237-6694		R10	5940-194-7724	8	E1
4020-264-7120		R2	5940-194-7724	8	E2
4020-279-7259	8	R12	5940-194-7724	8	E3
4020-283-1705		R6	5940-194-7724	8	E4
4020-283-4075		R9	5940-258-1839		
4010-101-5766		C2	5943-266-2034		
4010-101-5766		C3	5943-295-6041		
4010-101-5766		C4	5945-754-5798		O1
4010-101-5766		C5	5950-231-5279		T2
4010-101-5766		C6	5950-234-1828	7	T1
4010-101-766		C7	5950-243-5297	7	L1
4010-581-2552	7	C6	5950-244-5179	7	L3
4010-583-1934	7	C8	5960-262-0218		
4010-660-7504	7	C1	5960-273-2460		
4010-762-2945	7		5970-285-0123		
4020-258-2471			5970-405-8971		
4020-284-4153		F1	5970-683-3763		
4020-581-7957		E5	5970-688-8969		
4025-930-5559	3		5975-187-5295		
4030-188-7243		S4	5985-199-8831		
4030-188-7243		S7	5985-238-7474		
4030-188-7243		S8	5985-351-4722		
4030-189-0791		S5	5985-497-8791		
4030-189-0791		S6	5995-160-5954		W14
4030-244-8949			5995-161-4670		
4030-356-2401		S2	5995-161-4673		
4030-356-2402		S1	5995-162-7141		
4030-518-1929		S3	5995-163-0035		
4030-685-5807		S9	5995-163-1740		
4035-129-9358		X1	5995-163-1741		
4035-129-9358		X2	5995-163-1742		W106
4035-149-3419		J14	5995-164-6494		W7
4035-149-3419	8	J2	5995-164-6598		
4035-149-3427	8	J11	5995-164-7692		W1
4035-149-3462	8	J10	5995-164-7902		W108
4035-149-3462	8	J12	5995-170-7919		W11

SECTION IV

TM11-5820-202-34P

STOCK NUMBER	FIGURE NO.	ITEM NO.	STOCK NUMBER	FIGURE NO.	ITEM NO.
9995-170-7929		WB	6140-120-8114		
9995-170-7949		WB	6140-120-8012		
9995-170-8773			6140-121-1779		
9995-170-8780			6140-121-8009		
9995-220-4334			6140-120-8442		
9995-237-8037			6210-120-7973		11
9995-237-8038		WB	6210-121-8073		
9995-230-8424			6210-120-8070		
9995-235-8471			6210-120-8071		
9995-230-9008		WB	6210-120-8572		
9995-272-9111			6210-120-8061		12
9995-272-9138		WLT	6240-125-8636		12
9995-272-9144			6240-125-8706		
9995-284-8479			6240-127-2860		
9995-295-8175			6420-118-6723		13
9995-342-6243			7100-141-5546		
9995-322-2487		WB	7110-408-8217		
9995-823-2134			7520-201-5918		
6130-104-8308		CRI	7820-191-5812		
6130-104-8308	7	L3	9000-205-1044		
6145-128-8695					

REFERENCE NO.	NFR CODE	FIG. NO.	ITEM NO.	REFERENCE NO.	NFR CODE	FIG. NO.	ITEM NO.
AN3057-12	80059			FNN19G	81349		E5
AN3057-6	80059			GP24	80058		
AN3057-8	80059			HRP	42498		
AN3102-1452P	80059	8	J10	JJ026	80058		
AN3102-1452P	80059	8	J12	JJ089	80058		J9
AN3102-1452P	80059	8	J13	JJ089	80058		J16
AN3102-1452P	80059	8	J11	JJ089	80058	8	J1
AN3108A1455P	80059			JJ089	80058	8	J3
AN3108A1455S	80059			JJ089	80058	8	J4
AN3108A1454S	80059			JJ089	80058	8	J5
AN3108B1451P	80059			JJ089	80058	8	J6
AN3108B1452P	80059			JJ089	80058	8	J7
AN3108B1452S	81350			JJ089	80058	8	J8
AN3108B1457S	80059			J45	80063		
AN3108B2027S	80059			KS90	09922		
AN3108B8027P	80059			K868236-1	23921		
A9232	73428			LN52-47	24446		
8G198	80058			L422	81349		
8G199	80058			MP50	99176		
8G200	80058			MP50A	99176		
8P8732	15235			MP24MIMDCUR	81350		M1
8RN70732	15235			MS116	80058		
CD763	80058		M1	MS117	80058		
CE42C151J	81349	7	C1	MS118	80058		
CE42C250M	81349	7	C8	MS106A22-275	96906	8	J15
CE42C300P	81349	7	C8	MS35058-9	81349		S4
CG389MJ	80058			MS35058-9	81349		S7
CG390U	80058			MS35058-9	81349		S8
CG562AU	80058			MS35059-15	81349		S3
CG67AM02	80058		M14	MS35059-9	81349		S5
CM15FD471G03	81349	7		MS35059-9	81349		S6
CM35C103K	81349		C2	MS49	80058		
CM35C103K	81349		C3	MS50	80058		
CM35C103K	81349		C4	MS51	80058		
CM35C103K	81349		C5	MS52	80058		
CM35C103K	81349		C6	MS53	80058		
CM35C103K	81349		C7	MT657GRC	80058		
CO119A	80063			M115	81860		
CT112	94297			M359	80063		
CX1165U	80058		W2	M448	80063		
CX1166U	80058		W3	PJ0558	80058		
CX1200U	80058			PL114	80058		
CX1201U	80058			PL258	80063		
CX1851U	80058			PL259A	80058		
CX955TRA7	80058			Q2B1N3C	77638		CRI
CX956TRA7	80058			Q2B1N5G	77638	7	L3
CX957TRA7	80058			RA20A2SA5021K	81349		R5
CX958TRA7	80058			RA202SA501K	81349		R3
CX959TRA7	80058			RA30A1FK102AK	81349		R4
CY901GPC264	80058			RA30A1FK102AK	81349		R11
C660046	14933	3		RB16K10001	81349		R6
DPH	72619			RB16K36800F	81349		R7
FC571B	81349			RW29G102	81349		R1

SECTION IV

TM11-5802-202-34P

REFERENCE NO.	MFR CODE	FIG. NO.	ITEM NO.	REFERENCE NO.	MFR CODE	FIG. NO.	ITEM NO.
RM296100	80349		98	15939	80089	7	11
RM906200	80349		92	15940	80089	7	13
RM926100	80349		99	15941	80089	7	11
SC27966	80063			27MAT	99777		
SC279625GR1	80063			251	99777		
SC27979	80063			26512	99777		
SC27982GR2	80063			308202	26916		
SC2720020	80063			3102-1457P	80059		J14
SC274600	80063			3102-1457P	80059	8	J2
SC274600	80063		W106	4-1-2	75042		R10
SC274600	80063		W108	40A128	75042	8	R12
SC258578	80063		W5	413001	75915		F1
SC2585140	80063		T2	4211A	89208		
SC2585141	80063	7	T1	5F3WGT	91350		
SC222674	80063		W9	50ARS	08108		12
SC222689	80063			5049	70903		
SC222619	80063			6697	00629		
SC222689	80063		W8	6781720	26916		
SC222630	80063		W11	674	22660		
SC222834A	80063			70306	26916		
SC222837	80063		W17	72JC2160FGTCP	78277		M1
SC222840	80063			7221	83315		
SC222840-1	80063			7239W	81860		
SC227457	80063		W7	7238	83315		
SC2530	80063	8	F1	739606	26916		
SC2530	80063	8	E2	738616	26916		
SC2530	80063	8	E3	7555G	83315		
SC2530	80063	8	F4	7572	83315		
SC25316	80063			768702	26916		
SC251971	81349		X1	7664K3	27191		59
SC251971	81349		X2	79-08F1	02660		
UG2150	80058			79-08M	02660		
UG2140	80058			8-24	76854		12
UG2150	80058			8-32	76854		11
W0177	80058			8-510-7A	99777		
2205	44655		99	8-55	99777		12
0569	44655	8	012	8-56	99777		
1052CR	79506			841571	26916		
1230	92194			881572	26916		
128003	75915			8537	70367		
128009	75915			93-111	72619		
144WGW1	81349			932210-1	72619		
144WGW12R	81349			932210-112	72619		11
15T74125	03538			932210-113	72619		12
15938	80089		T2	93246-112	72619		

By Order of the Secretary of the Army:

CREIGHTON W. ABRAMS
General, United States Army
Chief of Staff

Official:

VERNE L. BOWERS
Major General, United States Army
The Adjutant General

Distribution:

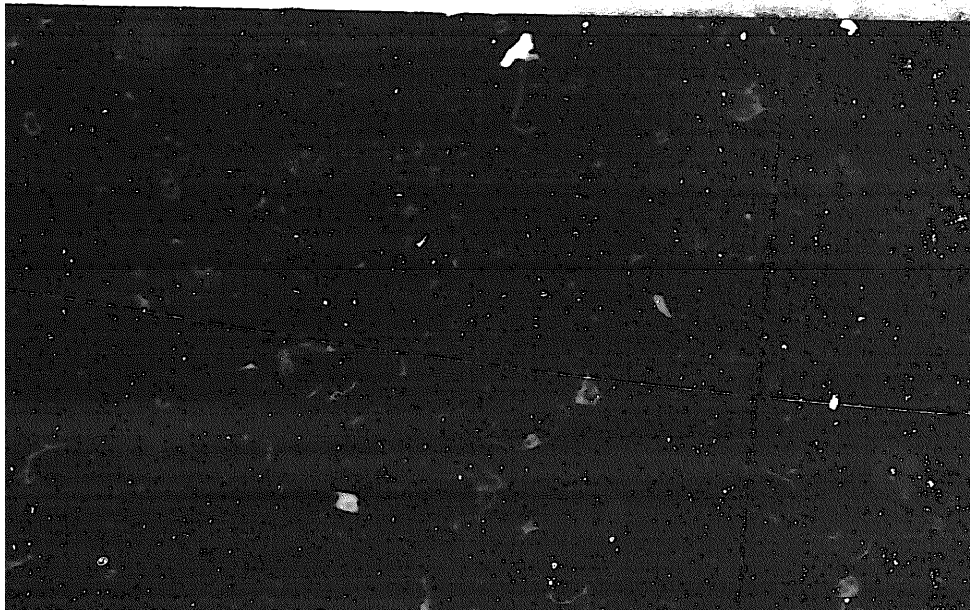
To be distributed with DA Form 12-51 (qty rqr block No. 99) Direct and General Support Maintenance requirements for AN/GRC-26.

END

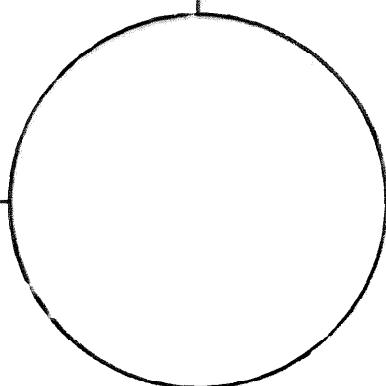
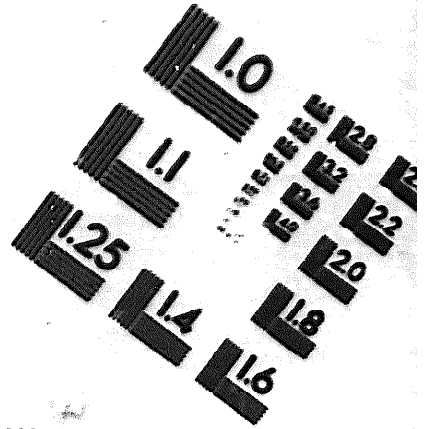
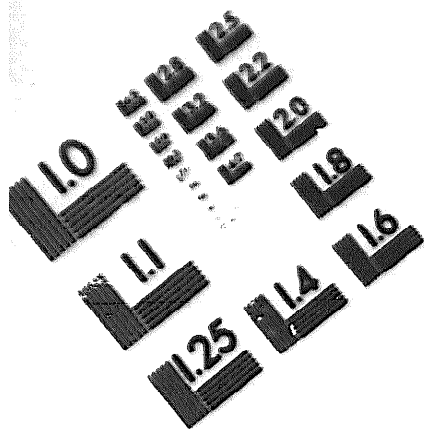
7-25-83

DATE





DEPARTMENT OF THE ARMY
MICROFORM
TEST TARGET



150 MM

1.0 mm (e= 0.81 mm)

ABCDEFGHIJKLMN OPQRSTUVWXYZ 1234567890
abcdefghijklmnopqrstuvwxyz \$%&' /%# 1/2 3/4 — = + x & @ *

1.5 mm (e= 1.09 mm)

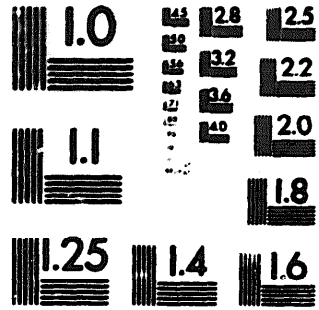
ABCDEFGHIJKLMN OPQRSTUVWXYZ 1234567890
abcdefghijklmnopqrstuvwxyz \$%&' /%# 1/2 3/4 — = + x & @ *

2.0 mm (e= 1.37 mm)

ABCDEFGHIJKLMN OPQRSTUVWXYZ
abcdefghijklmnopqrstuvwxyz
1234567890 \$%&' /%# 1/2 3/4 — = + x & @ *

2.5 mm (e= 1.77 mm)

ABCDEFGHIJKLMN OPQRSTUVWXYZ
abcdefghijklmnopqrstuvwxyz
1234567890 \$%&' /%# 1/2 3/4 — = + x & @ *



1.0 mm (e= 0.81 mm)

ABCDEFGHIJKLMN OPQRSTUVWXYZ 1234567890
abcdefghijklmnopqrstuvwxyz \$%&' /%# 1/2 3/4 — = + x & @ *

1.5 mm (e= 1.09 mm)

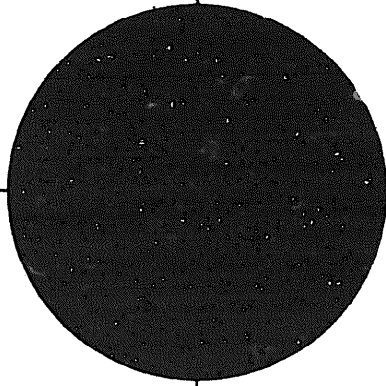
ABCDEFGHIJKLMN OPQRSTUVWXYZ 1234567890
abcdefghijklmnopqrstuvwxyz \$%&' /%# 1/2 3/4 — = + x & @ *

2.0 mm (e= 1.37 mm)

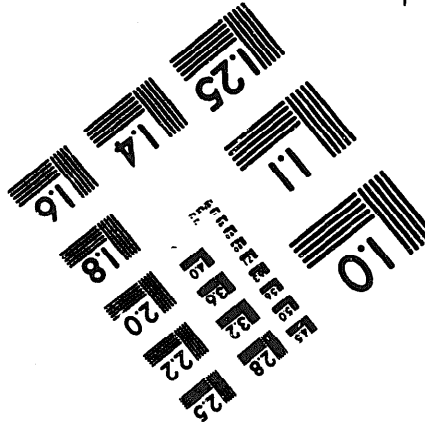
ABCDEFGHIJKLMN OPQRSTUVWXYZ
abcdefghijklmnopqrstuvwxyz
1234567890 \$%&' /%# 1/2 3/4 — = + x & @ *

2.5 mm (e= 1.77 mm)

ABCDEFGHIJKLMN OPQRSTUVWXYZ
abcdefghijklmnopqrstuvwxyz
1234567890 \$%&' /%# 1/2 3/4 — = + x & @ *



200 MM



250 MM